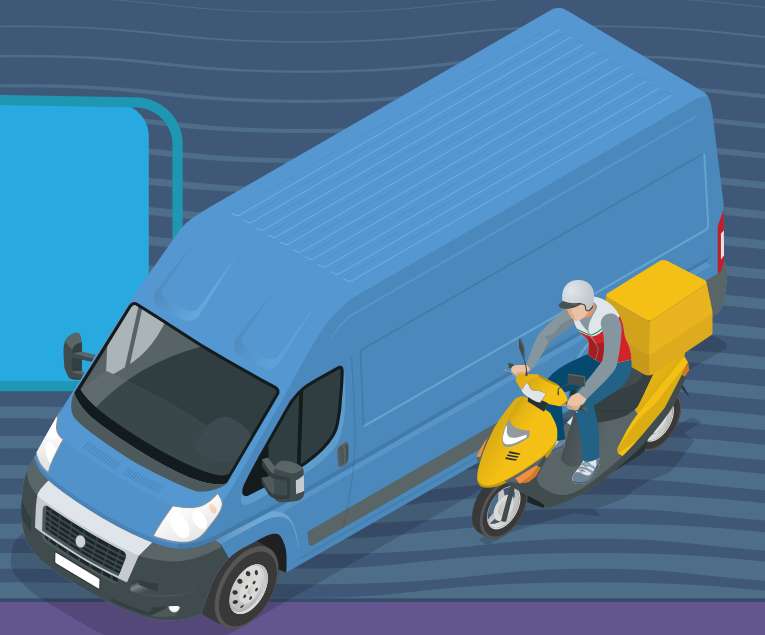


## TRANSPORTATION AND DELIVERY



Victims may be hidden in plain sight

Occurs in many industries like transportation and delivery



### Victims

- may be in process of being moved from worksite to worksite;
- may be transported in groups by van, truck, or private bus;
- are often accompanied by a trafficker or handler

### Reporters may include

mass transit employees, travelers, delivery drivers, taxi and rideshare drivers, truckers, or front desk personnel for trains, buses, and airlines



Labor trafficking occurs when

individuals are compelled to perform labor or services through the use of force, fraud, or coercion

### It includes

transit employees, travelers, and package-delivery recipients

### Traffickers

rely heavily on various transportation methods and systems to move their victims

### Driver of vehicles

may have all the passengers' ID documents

The trafficker alone may attempt to speak to law enforcement on behalf of entire group

Traffickers often take advantage of

language barriers



## What can you do to help?

You should never get directly involved in a potential trafficking situation. Do not confront the victim or trafficker. If you believe you have observed a situation involving labor trafficking, immediately report the information to the National Human Trafficking Hotline or local law enforcement

## National Human Trafficking Hotline

Call 888-373-7888 • Text "BeFree" (233733)  
Live chat online at [humantraffickinghotline.org](https://humantraffickinghotline.org)

## Local contact information

For more information about the indicators of labor trafficking, visit [https://cops.usdoj.gov/labor\\_trafficking](https://cops.usdoj.gov/labor_trafficking).  
Know the signs to save a life!