

## FOOD AND BEVERAGE INDUSTRY



**Victims may live**  
where they work  
or in employer-  
owned housing

**Labor trafficking**  
occurs when

individuals are compelled to  
perform labor or services  
through the use of force,  
fraud, or coercion



**It includes**

adults and children of all  
genders and presentations

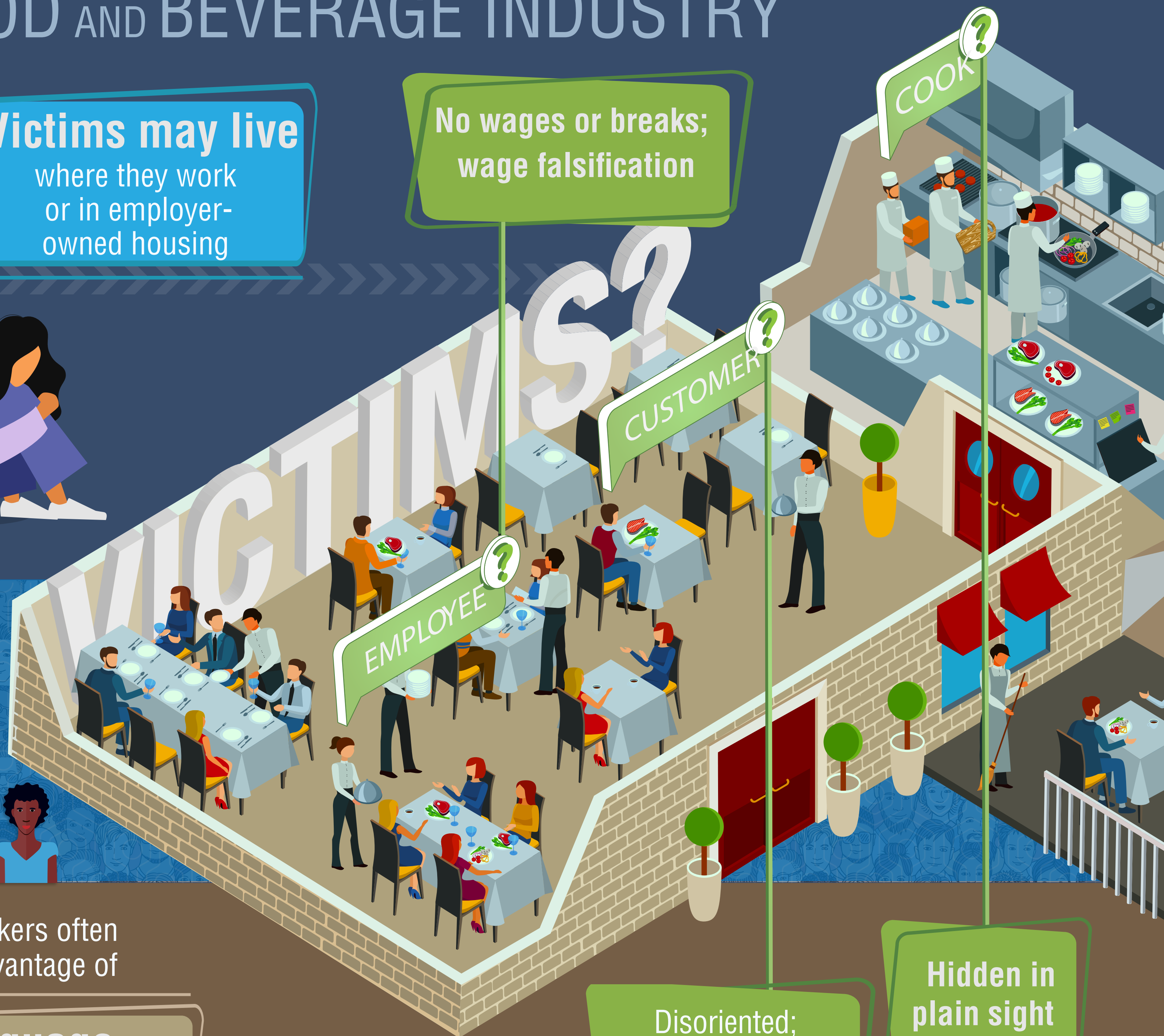


Hola  
Hello

こんにちは

Traffickers often  
take advantage of

**language  
barriers**



**No wages or breaks;  
wage falsification**

**CUSTOMER**

**EMPLOYEE**

**COOK**

**Disoriented;  
anxious; someone  
else speaks for them**

**Hidden in  
plain sight**

What can you do to help?

You should never get directly involved in a potential trafficking situation. Do not confront the victim or trafficker. If you believe you have observed a situation involving labor trafficking, immediately report the information to the National Human Trafficking Hotline or local law enforcement.

National Human Trafficking Hotline

Call 888-373-7888 • Text "BeFree" (233733)

Live chat online at [www.humantraffickinghotline.org](http://www.humantraffickinghotline.org)

Local contact information

For more information about the indicators of labor trafficking, visit [https://cops.usdoj.gov/labor\\_trafficking](https://cops.usdoj.gov/labor_trafficking).  
Know the signs to save a life!